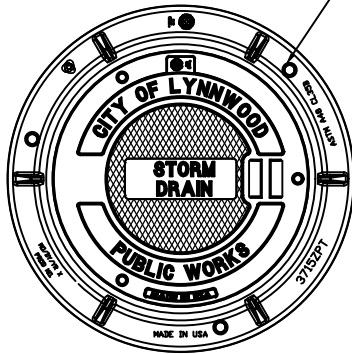
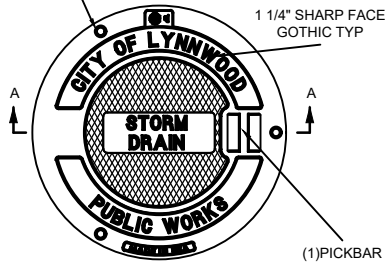


(3) 1" DIA. HOLES EQUALLY SPACED  
120 APART ON A 30 1/4" DIA B.C.

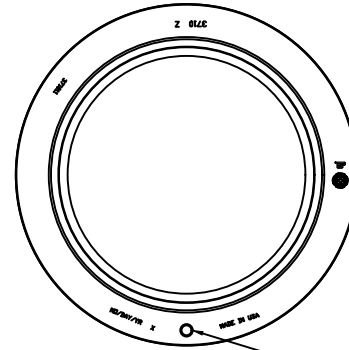


6" FRAME & COVER

(3) BOLTHOLES EQUALLY SPACED ON 23 1/16" DIA B.C.

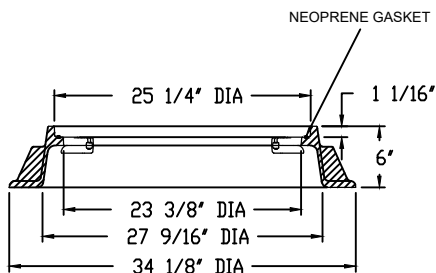


TOP VIEW

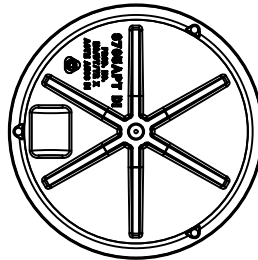


4" FRAME

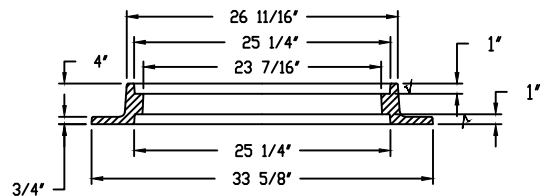
(1) 1" (25mm) DIA  
HANDLING HOLE



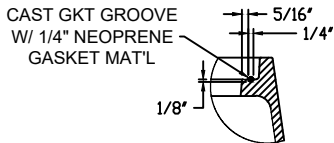
6" FRAME SECTION



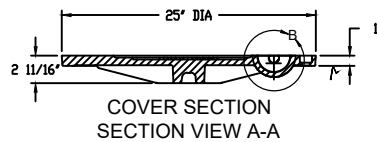
BOTTOM VIEW



4" FRAME SECTION

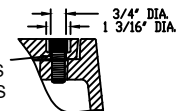


GASKET  
GROOVE  
DETAIL

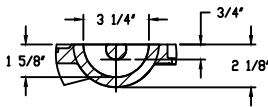


COVER SECTION  
SECTION VIEW A-A

(3) BLT SOC.  
(ALLEN HEAD)  
5/8"-11 X 1.5 SS W/SS  
& RUBBER WASHERS



BOLT  
DETAIL



DETAIL B

√ MACHINED SURFACE

**NOTES:**

1. THIS DETAIL FOR STORM MANHOLES IN RIGHT-OF-WAY ONLY. ALL OTHER MANHOLES SHALL ONLY BE MARKED "STORM" OR "DRAIN".
2. EJ MODELS: 6" FRAME (00371516), 4" FRAME (00371011), STORM DRAIN COVER (00370029) OR EQUIVALENT WITH PROJECT ENGINEER'S APPROVAL.
3. 4" MAY ONLY BE SUBSTITUTED AT THE DIRECTION OF THE CITY ENGINEER.
4. FRAME AND COVER FOR ALL MANHOLE ACCESS LARGER THAN 24" DIA. SHALL BE EJ IRONWORKS ERGO XL TYPE (OR EQUIVALENT).
5. DO NOT PLACE COVER WITHIN PEDESTRIAN PATHWAYS OR CROSSWALKS. ALTERNATIVE WITH NO HOLES OR GAPS LARGER THAN 1/2" MUST BE UTILIZED IN PEDESTRIAN PATHS.
6. COVER THICKNESS IS MEASURED FROM THE BOTTOM OF THE PATTERN.
7. FRAMES MUST BE MANUFACTURED FROM CAST IRON OR DUCTILE IRON.
8. COVERS MUST BE MANUFACTURED FROM DUCTILE IRON.
9. ALL FRAMES AND COVERS MUST BE LOCKING.



**STORM MANHOLE FRAME &  
COVER**

U-STO-7-Storm-Manhole-Frame-&Cover - 03252024.dwg

DRAWING NUMBER	U-STO-7
SCALE	NONE
REVISION DATE	3/24
DEPARTMENT	PW