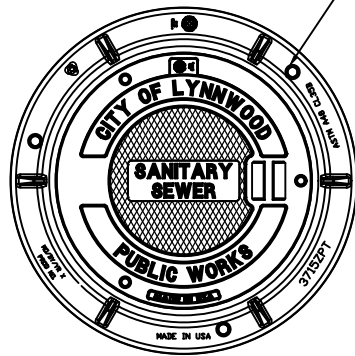
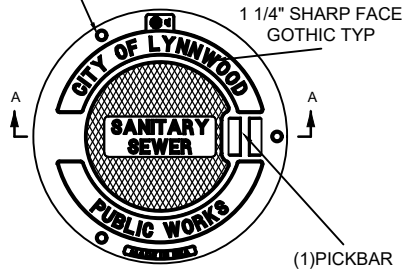


(3) 1" DIA. HOLES EQUALLY SPACED
120 APART ON A 30 1/4" DIA B.C.



6" FRAME & COVER

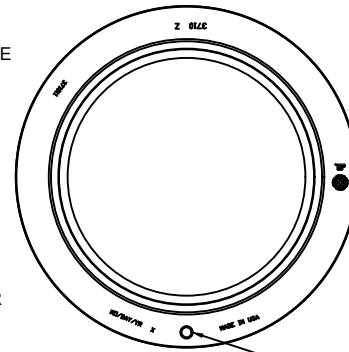
(3) BOLTHOLES EQUALLY SPACED
ON 23 1/16" DIA B.C.



TOP VIEW

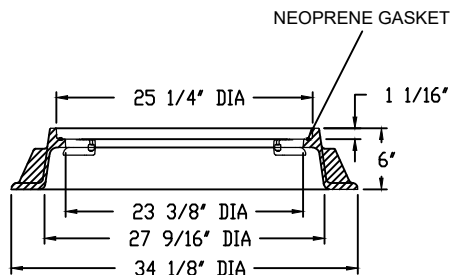
1 1/4" SHARP FACE
GOTHIC TYP

(1) PICKBAR

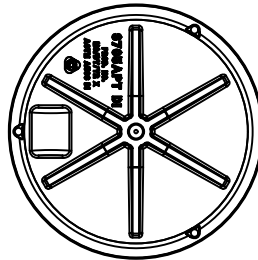


4" FRAME

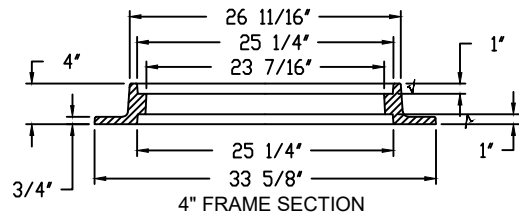
(1) 1" (25mm) DIA
HANDLING HOLE



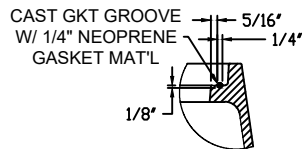
6" FRAME SECTION



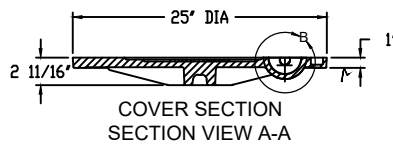
BOTTOM VIEW



4" FRAME SECTION

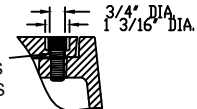


GASKET
GROOVE
DETAIL

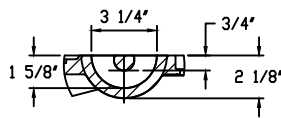


COVER SECTION
SECTION VIEW A-A

(3) BLT SOC.
(ALLEN HEAD)
5/8"-11 X 1.5 SS W/SS
& RUBBER WASHERS



BOLT
DETAIL



DETAIL B

√ MACHINED SURFACE

NOTES:

1. THIS DETAIL FOR STORM MANHOLES IN RIGHT-OF-WAY ONLY. ALL OTHER MANHOLES SHALL ONLY BE MARKED "STORM" OR "DRAIN".
2. EJ MODELS: 6" FRAME (00371516), 4" FRAME (00371011), SANITARY SEWER COVER (00370028) OR EQUIVALENT WITH ENGINEER'S APPROVAL.
3. 4" MAY ONLY BE SUBSTITUTED AT THE DIRECTION OF THE CITY ENGINEER.
4. FRAME AND COVER FOR ALL MANHOLE ACCESS LARGER THAN 24" DIA. SHALL BE EJ IRONWORKS ERGO XL TYPE (OR EQUIVALENT).
5. DO NOT PLACE COVER WITHIN PEDESTRIAN PATHWAYS OR CROSSWALKS. ALTERNATIVE WITH NO HOLES OR GAPS LARGER THAN 1/2" MUST BE UTILIZED IN PEDESTRIAN PATHS.
6. COVER THICKNESS IS MEASURED FROM THE BOTTOM OF THE PATTERN.
7. FRAMES MUST BE MANUFACTURED FROM CAST IRON OR DUCTILE IRON.
8. COVERS MUST BE MANUFACTURED FROM DUCTILE IRON.
9. ALL FRAMES AND COVERS MUST BE LOCKING.



**SEWER MANHOLE FRAME &
COVER**

U-SEW-1-Sewer-Manhole-Frame-&Cover - 03252024.dwg

DRAWING NUMBER	U-SEW-1
SCALE	NONE
REVISION DATE	3/24
DEPARTMENT	PW