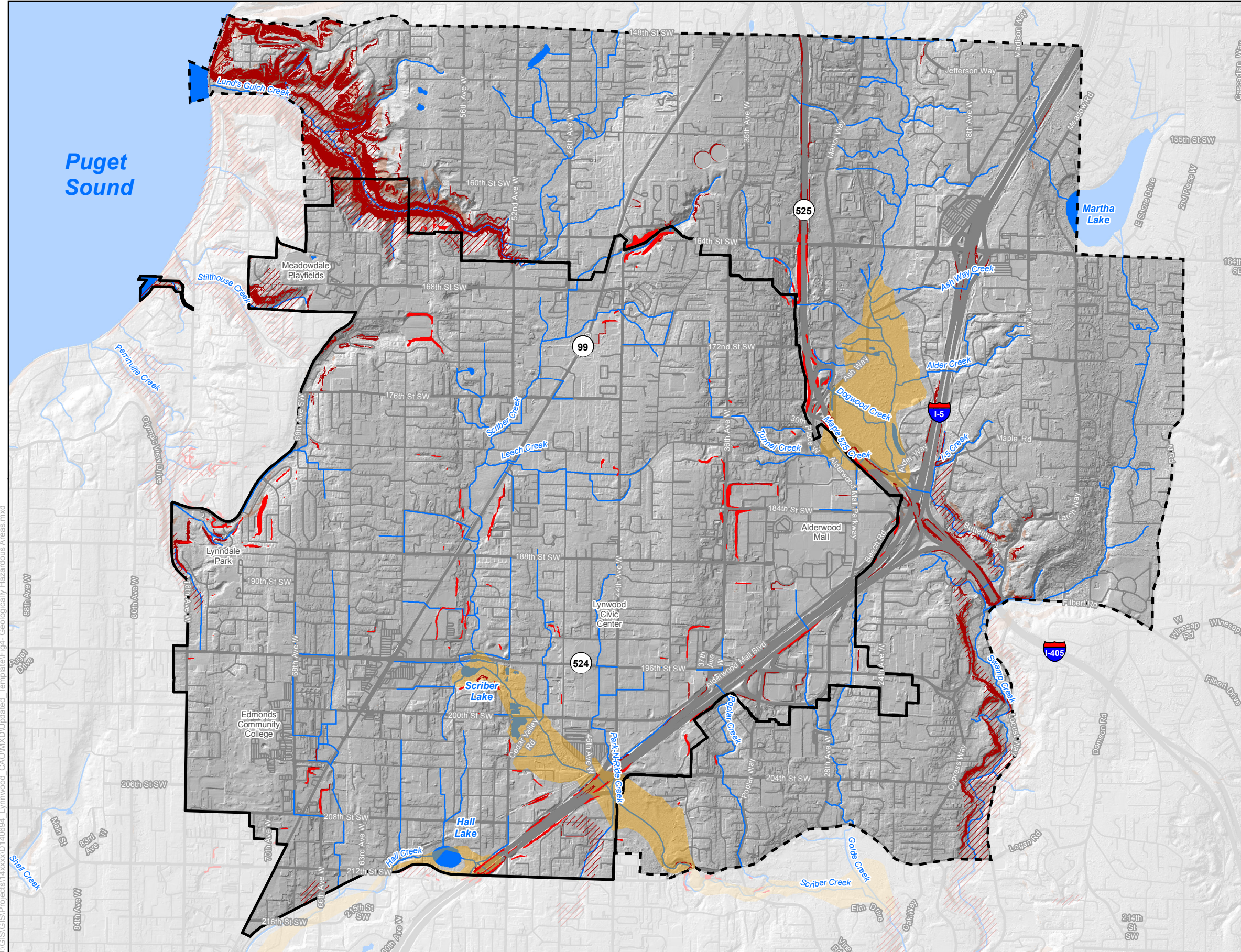


**ENVIRONMENTALLY
CRITICAL AREAS INVENTORY**

**Geologically Hazardous
Areas**



Legend

- Steep Slopes (City Inventory)
- Steep Slopes (2016 LiDAR Analysis)
- Potential Erosion Hazard Areas
- Potential Landslide Hazard Areas
- Seismic Hazard Areas
- Stream
- City Limits
- Municipal Urban Growth Area
- Water Body

0 0.5 Miles



SOURCE: Steep Slopes - ESA, 2016; City of Lynnwood, 2014; Potential Erosion Hazard Areas and Potential Landslide Hazard Areas - Snohomish County, 2013; Seismic Hazard Areas - WDNR, 2004; Puget Sound LiDAR Consortium, 2003

This figure is intended for planning purposes only. Environmentally critical areas layers depicted in this figure are based on available City of Lynnwood, Snohomish County, and Washington State inventory information, and do not represent surveyed boundaries. The City makes no representation or warranty as to this product's accuracy or location of any mapped features. For more information, contact the City of Lynnwood.

DRAFT



U:\GIS\Projects\14\140694_Lynnwood_CAO\MXD\Updated_Template\Fig4_Geologically Hazardous Areas.mxd