

consultants:

60% PROGRESS SET

project:
**BMW OF LYNNWOOD
SALES BUILDING**

18700 HIGHWAY 99
LYNNWOOD, WA 97037

revisions:

#	Description	Date
▲		
▲		
▲		

date: Issue Date
project: 05920A
drawn by: MV, NB
checked by: NW
copyright © 2023
Carlson Veit Architects P.C.

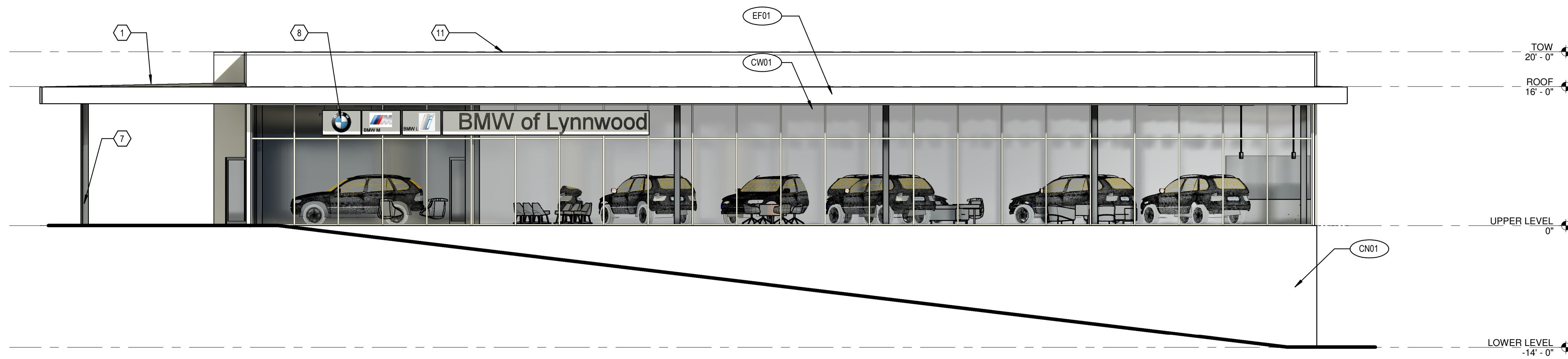
EXTERIOR
ELEVATIONS

sheet:
A-201

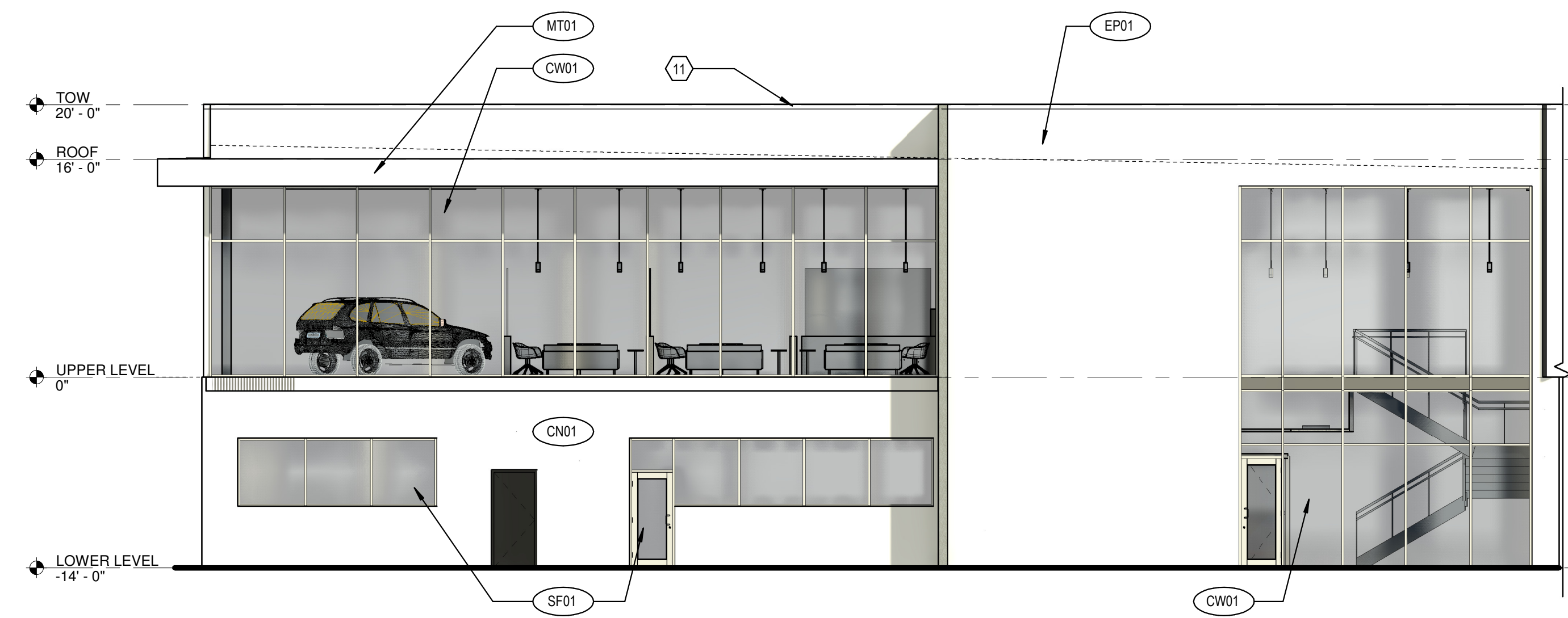
EXTERIOR MATERIAL SCHEDULE					
TAG	DESCRIPTION	MANUFACTURER	STYLE	COLOR/FINISH	REMARKS
ACT	CONCRETE	PROVIDED BY LOCAL MANUFACTURER	NATURAL CONCRETE	PAINT, EP01	
CN01	EXTERIOR PAINT	BENJAMIN MOORE	EXTERIOR PAINT	COLOR: TO MATCH RAL 9010 PURE WHITE, FINISH: SEMI-GLOSS	
EP01	EXTERIOR INSULATION FINISH SYSTEM	PAREX	STANDARD WATER MASTER WITH SPECIALTY FINISH	COLOR: #NAC 66067, COLOR TO MATCH RAL 9010 PURE WHITE; FINISH SUPER SMOOTH WITH AQUASOL COATING	COORDINATE WITH PAREX REP
MT01	PREFINISHED BRAKE METAL		KYNAR ALUMINUM	BOHE WHITE	COPINGS AND TRIM COORDINATE WITH PAREX REP
CW01	PREFINISHED CURTAIN WALL	KAWNEER	1600 WALL SYSTEM 2 INSULATED GLAZING	STERLING GRAY	MANUFACTURER SUBSTITUTIONS NOT ALLOWED
SF01	PREFINISHED STOREFRONT	KAWNEER	TRI FAB VERSAGLAZE 45IT W/ INSULATED GLAZING	STERLING GRAY	MANUFACTURER SUBSTITUTIONS NOT ALLOWED

EXTERIOR NOTES

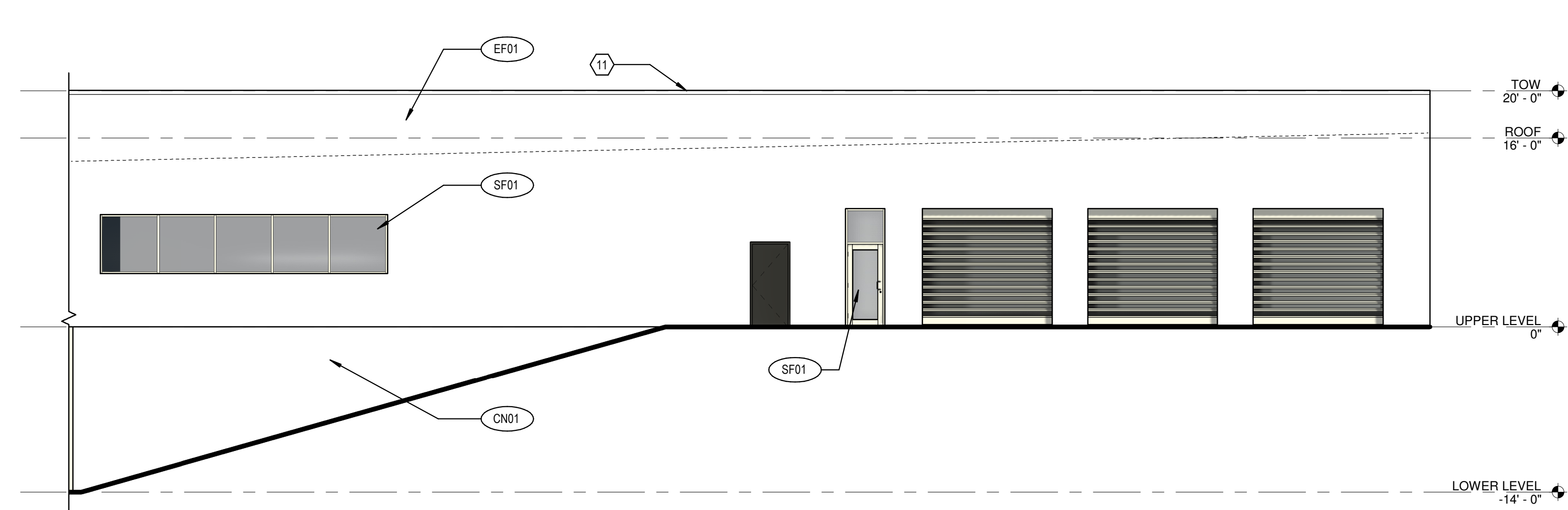
- ① CANOPY
- ② ENTRY DOORS
- ③ ACCENT CAR
- ④ SHOWROOM VEHICLE DOORS
- ⑤ NEW VEHICLE DELIVERY
- ⑥ SERVICE DRIVE DOORS
- ⑦ STRUCTURAL COLUMN
- ⑧ OFCI BRAND SIGNAGE, COORD W/ POWER
- ⑨ SERVICE SIGNAGE
- ⑩ LONG DISTANCE SIGN
- ⑪ 4" CAP FLASHING



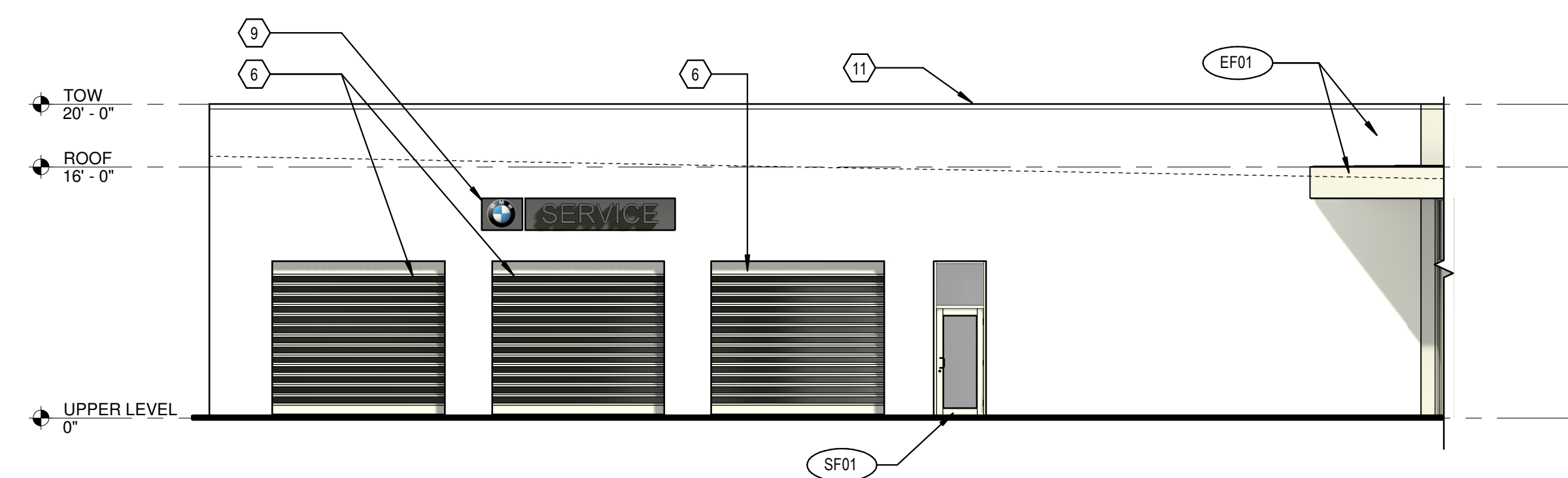
A SOUTHEAST ELEVATION GROUND FLOOR TRANSPARENCY = 40%
1/8" = 1'-0"



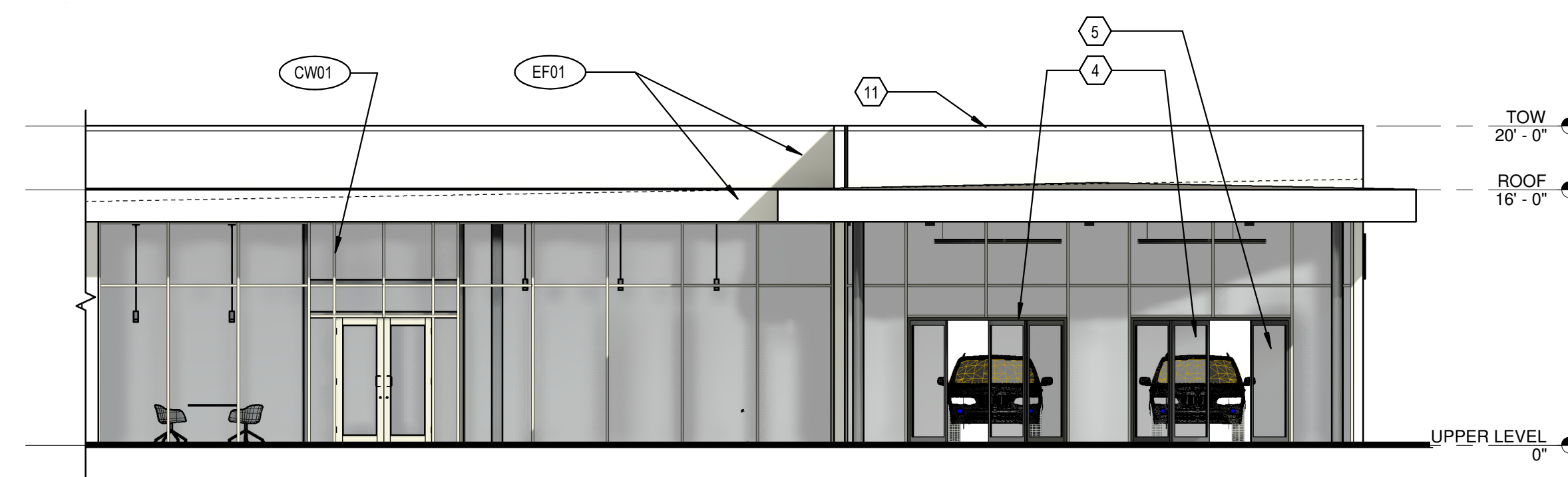
B NORTHEAST ELEVATION
1/8" = 1'-0"



C NORTH ELEVATION
1/8" = 1'-0"

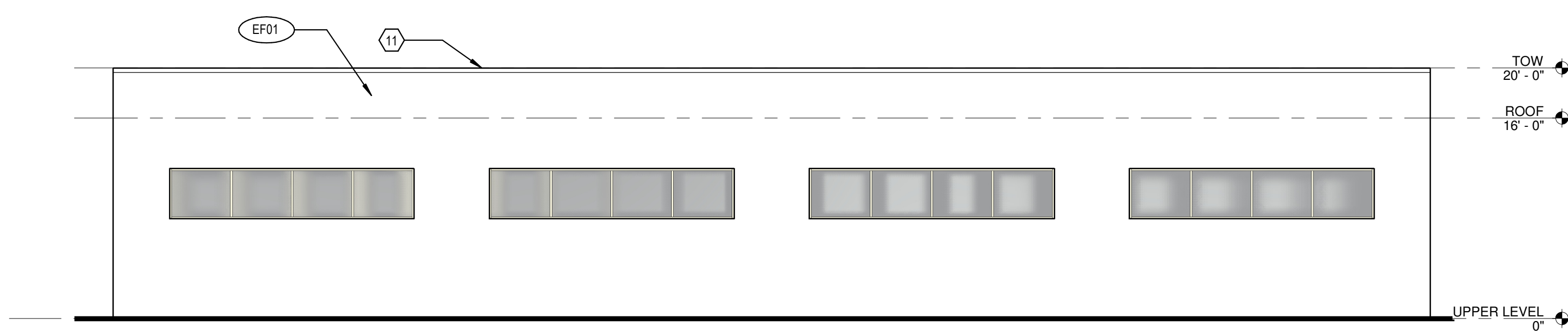


D SOUTH ELEVATION GROUND FLOOR TRANSPARENCY = 39%
1/8" = 1'-0"



E SOUTHWEST ELEVATION GROUND FLOOR TRANSPARENCY = 100%
1/8" = 1'-0"

GLAZING CALCULATION	
TOTAL GLAZING AREA	= 5,464 SF
TOTAL WALL AREA	= 12,172 SF
5,464 / 12,172	= 44.9%



F WEST ELEVATION
1/8" = 1'-0"



EF01, RAL 9010



CN01, RAL 9010



CW01



CLEAR RYTEC DOORS

Lynnwood BMW - Sales Building

Exterior Rendering

